

KORG

KORG KONTROL Editor Owner's Manual

Ⓔ Ⓐ

Table of Contents

Introduction	2
What is the KORG KONTROL Editor?	2
Operating requirements	2
Installation	3
Installation for Windows users	3
Installation for Mac OS X users	3
Quick start	4
Starting the KORG KONTROL Editor	4
Editing scene data	4
What are scene data and scene sets?	5
Writing scene data into your Korg MIDI controller	5
KORG KONTROL Editor screens and functions	6
Device select screen	6
Show only connected devices	6
Main screen	6
Items in the screen and their function	7
Basic operation	8
Other operations	8
Preference settings	9
MIDI ports	9
Other	9
File management	10
Menu	11
File	11
Edit	11
Send	12
Help	12
Troubleshooting	13
Software won't start up	13
Can't transfer data	13

- Apple and Mac are trademarks of Apple Inc., registered in the US and other countries.
- Windows XP, Windows Vista and Windows 7 are trademarks of Microsoft Corporation in the US and other countries.
- All product names and company names are the trademarks or registered trademarks of their respective owners.
- Specifications and appearance are subject to change without notice for improvement.

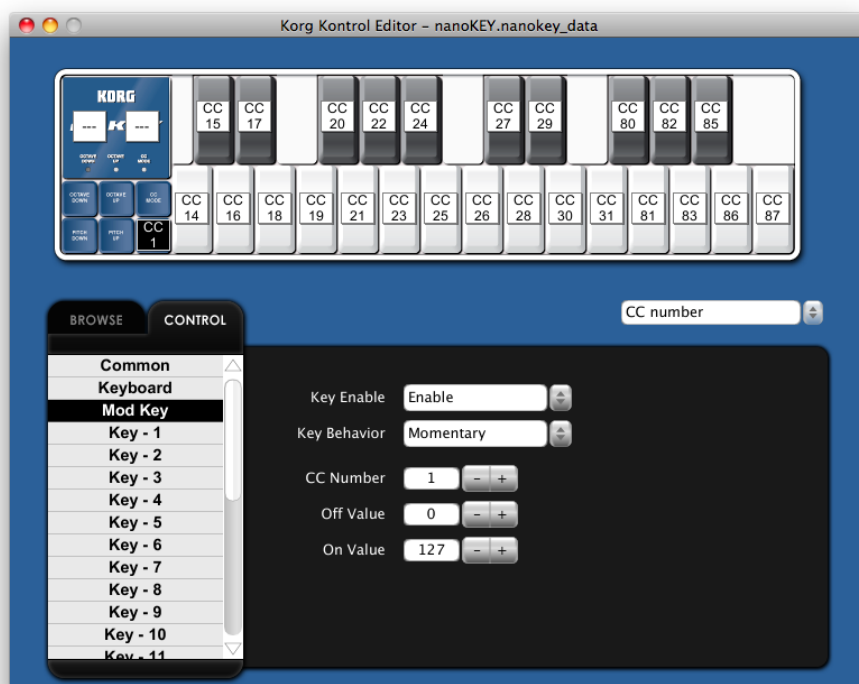
Introduction

Thank you for purchasing a Korg MIDI controller.

To help you get the most out of your new instrument, please read this manual carefully.

What is the KORG KONTROL Editor?

The KORG KONTROL Editor lets you edit the parameters in your Korg MIDI controller, and save the settings on your computer.



Caution

- ⚠ Do not disconnect your Korg MIDI controller while the KORG KONTROL Editor is running.
- ⚠ Do not use your Korg MIDI controller or the KORG KONTROL Editor while any data is being transmitted.

Operating requirements

Mac OS X

- | | |
|-------------------------|------------------------------------------------------------------------------------------------------------------------------------|
| Computer | Apple Macintosh computer with Intel or Power PC processor that is equipped with a USB port and meets the requirements for Mac OS X |
| Operating system | Mac OS X 10.4 or later |

Windows

- | | |
|-------------------------|------------------------------------------------------------------------------------------------------------------------------------|
| Computer | Computer equipped with a USB port (a USB chipset made by Intel is recommended) that meets the requirements for Windows XP/Vista /7 |
| Operating system | Windows XP SP3(32bit) or later, Windows Vista SP2(32bit, 64bit) or Windows 7(32bit, 64bit) |

- ⚠ Keyboard operation is not guaranteed with all computers that satisfy these system requirements.

Installation

Installation for Windows users

Proceed as follows to install the software in Windows.

- 1 Double-click “Setup_E.exe” to start the installation process.
- 2 The KORG KONTROL Editor Installer screen will appear. Follow the on-screen directions to install the software.

Installation for Mac OS X users

Proceed as follows to install the software in Mac OS X.

- 1 Double-click “KORG KONTROL Editor.pkg” to start the installation process.
- 2 Once the installer begins, follow the on-screen directions to complete the installation.



Quick start

Starting the KORG KONTROL Editor

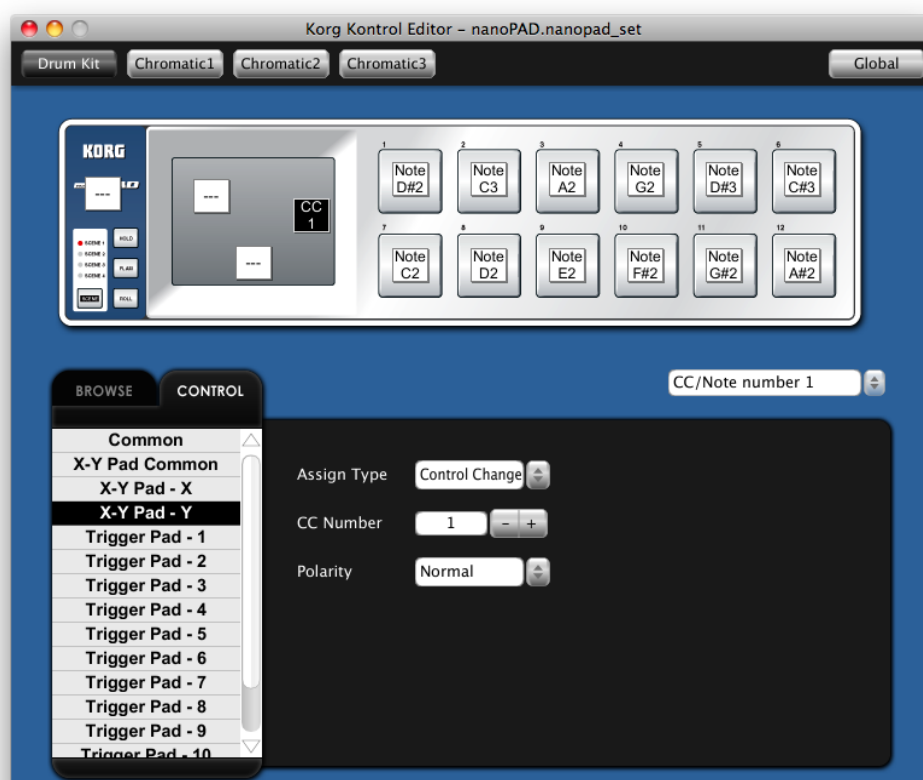
note In order to use the KORG KONTROL Editor, you must download the Korg USB-MIDI driver from the Korg website and install it as described in the accompanying documentation. (<http://www.korg.com>)

- 1 Use a USB cable to connect your Korg MIDI controller to your computer.
- 2 In the “KORG”-“KORG KONTROL Editor” folder, select “KORG KONTROL Editor” to begin.
Mac OS X The “KORG” folder is located in the “Applications” folder.
Windows The “KORG” folder is located in the taskbar “Start”-“All Programs”
- 3 The main screen for the connected controller will appear, and then scene data will automatically be read from the Korg MIDI controller.

note If more than one Korg MIDI controller is connected, a Korg MIDI controller selection screen will appear. Select the device whose settings you want to edit.

Editing scene data

Here’s how to edit scene data in the main screen.



- 1) SCENE buttons will be displayed if the device has more than one scene. Click the scene that you want to edit.
- 2) In the screen, click the control that you want to edit.
- 3) The parameters of the selected control are shown in the parameter edit area in the lower right pane. Here you can edit the parameters.

What are scene data and scene sets?

Parameters are assigned to the controls (sliders, knobs, X-Y pad, etc.) of a Korg MIDI controller. These parameter assignments are collectively called “scene data.”

Some Korg MIDI controllers have more than one scene; a collection of these scenes is called a “scene set.”

Writing scene data into your Korg MIDI controller

In order for the parameters that you’ve edited in the KORG KONTROL Editor to be reflected in your Korg MIDI controller, you’ll need to write the edited scene data into the Korg MIDI controller. Here’s how: From the “Send” menu, choose “Write Scene Data.” A confirmation dialog box will appear, then click the OK button.

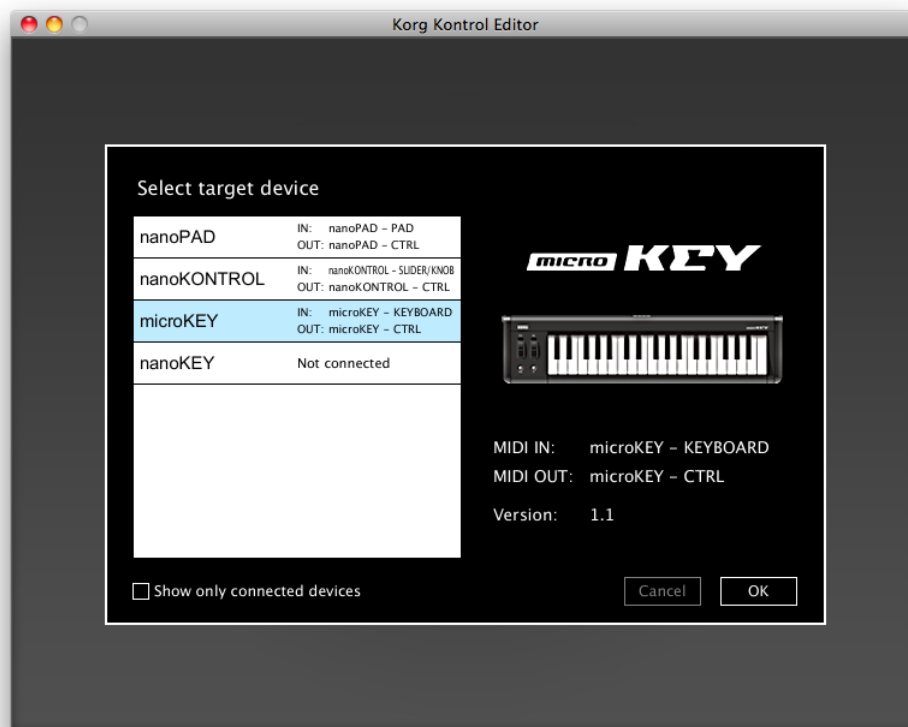
 Do not use your Korg MIDI controller or KORG KONTROL Editor while any data is being transmitted.

KORG KONTROL Editor screens and functions

This section provides a brief explanation of the KORG KONTROL Editor's screens and their functions.

Device select screen

Here you can select the device (Korg MIDI controller) that you want to edit.



When you select a device, information about that device will appear in the right side of the screen. If this is the device whose parameter settings you want to edit, click the OK button.

Show only connected devices

The KORG KONTROL Editor allows you to edit the parameters of a device that is not connected. To do so, un-check the “Show only connected devices” check box.

Select this check box if you want to see only the that are connected.

note If the preference setting “Specify MIDI ports manually” is on, you won't be able to set the “Show only connected devices” option.

Main screen

The main screen is where you can edit your device's scene data.



Items in the screen and their function

Device

This area shows an image of the device that you selected in the device select screen.

SCENE button

Click the SCENE button of the scene that you want to edit.

⚠ This button may not be displayed, depending on the selected device.

GLOBAL button

Click the GLOBAL button to access the global data edit screen.

On the global data edit screen, you can set, transfer, save or load data.

⚠ This button may not be displayed, depending on the selected device.

Parameter display switch

This lets you switch the parameters that are shown over each control in the device image.

Parameter edit area

This area enables you to view and edit the parameters of the selected control.

Controls

This area shows the parameters that you selected using the parameter display switch.

If you've selected a parameter that the control does not have, this will indicate "--".

When you click this, the parameters of the control will appear in the parameter display area.

Switching the BROWSE / CONTROL tabs

BROWSE tab

This shows the folder hierarchy of your computer's hard disk.

From the folder and file tree, you can select a scene set file and load it.

CONTROL tab

This lists the controls.

When you click in the control list, the parameters of that control will appear in the parameter edit area.

Basic operation

Here's the basic procedure for editing in the main screen.

- 1** If your device has more than one scene, SCENE buttons are displayed. Select the scene that you want to edit.
- 2** Click a control in the device image or in the control list of the CONTROL tab.
- 3** The parameters of the selected control are shown in the parameter edit area. Edit the parameters here.

For details on each parameter, refer to the owner's manual of your Korg MIDI controller.

Other operations

Cut, Copy, Paste, Clear

You can edit the setting for the SCENE buttons and the controls in the CONTROL tab, by performing "Cut," "Copy," "Paste," and "Clear" operations from the "Edit" menu.

Drag and drop

You can exchange the setting for the SCENE buttons and the controls in the CONTROL tab, you can exchange the settings by dragging and dropping. To copy the settings, drag and drop while holding down the Ctrl key (Mac: Option key).

Undoing the most recent operation

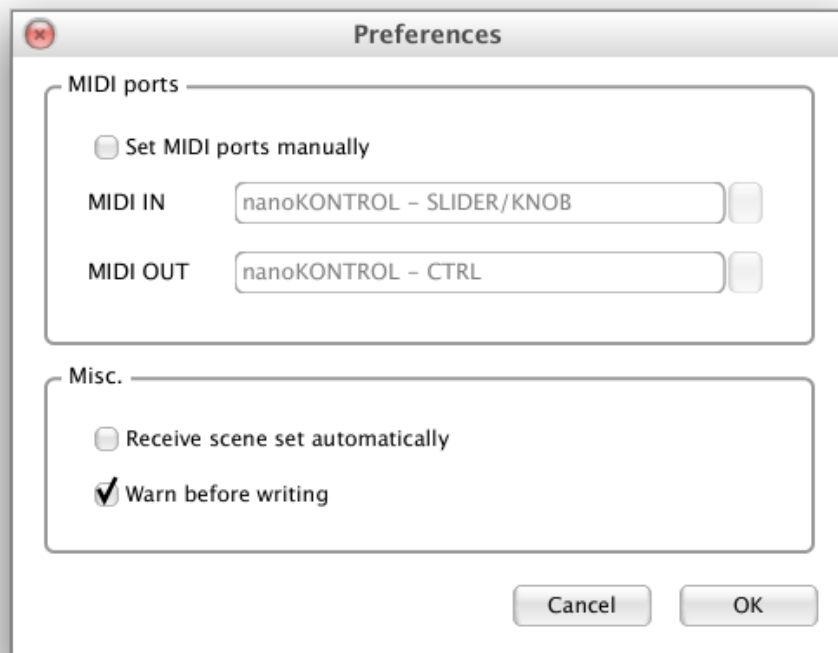
By selecting the "Undo" command from the "Edit" menu you can undo the previous operation.

Redoing an undone operation

By selecting the "Redo" command from the "Edit" menu you can return to the state prior to executing the "Undo" command.

Preference settings

Choose “Preferences ...” from the “Edit” menu to access the Preferences dialog box.



MIDI ports

Specify MIDI ports manually

Turn this on if you want to specify the MIDI ports manually instead of using automatic device detection. If this setting is on, use the MIDI IN and MIDI OUT fields to specify the ports to which your Korg MIDI controller is connected.

MIDI IN

Specify the MIDI IN port to which your Korg MIDI controller is connected.

MIDI OUT

Specify the MIDI OUT port to which your Korg MIDI controller is connected.

Other

Load data automatically

If this setting is off, scene data will not be automatically loaded from your Korg MIDI controller when the main screen for the device is shown.

Warn when writing data

If this setting is off, a warning dialog box will not appear when writing data to your Korg MIDI controller.

File management

The following data can be transferred between the KORG KONTROL Editor and your Korg MIDI controller.

Device	Type	Content	Extension
nanoKEY	Scene data	All parameters that can be set on the nanoKEY, such as velocity curve and MIDI channel.	nanokey_data
nanoPAD	Scene data	All parameters in one nanoPAD scene, such as trigger pads and X-Y pad.	nanopad_data
	Scene set	Parameters for four scenes. (not including global parameters)	nanopad_set
	Global data	The nanoPAD's global parameters, such as the global MIDI channel and velocity curve.	nanopad_glob
nanoKONTROL	Scene data	All parameters in one nanoKONTROL scene, such as sliders and buttons.	nktrl_data
	Scene set	Parameters for four scenes	nktrl_set
microKEY	Scene data	All parameters that can be set on the microKEY, such as velocity curve and MIDI channel.	microkey_data

Menu

File

Select device

Opens the device select screen.

New

Creates a new scene set for the device that is currently selected.

Open

Loads a scene set file. If you select a file for a device other than the one selected in the main screen, the main screen for the device of the selected file will appear.

note For devices that do not feature multiple scenes, use this command to load scene data.

Save

Saves the currently-edited scene set by overwriting the existing scene set file.

note For devices that do not feature multiple scenes, use this command to save scene data to an existing file.

Save As

Saves the currently-edited scene set as a new file with the name you specify.

note For devices that do not feature multiple scenes, use this command to save scene data as a new file.

Load Scene Data

Loads a scene data file into the currently-edited scene.

note This command is unavailable for devices that do not feature multiple scenes.

Save Scene Data

Saves the currently-edited scene as a scene data file.

note This command is unavailable for devices that do not feature multiple scenes.

Edit

Undo

Returns to the state prior to the previous operation.

Redo

Returns to the state prior to executing the Undo command.

Cut

Cuts the selected scene data or control parameter.

Copy

Copies the selected scene data or control parameter.

Paste

Pastes the cut or copied content to the selected scene data or control parameter.

Clear

Clears the selected scene data or control parameter.

Preferences

Displays the Preferences dialog box.

Send

Load Scene Set

Loads the scene set from your Korg MIDI controller.

Write Scene Set

Writes the currently-edited scene set to your Korg MIDI controller.

Load Scene Data

Loads the scene data of the scene currently selected in the KORG KONTROL Editor from your Korg MIDI controller.

Write Scene Data

Writes the scene data of the scene currently selected in the KORG KONTROL Editor to your Korg MIDI controller.

Help

About

Displays the software version of the KORG KONTROL Editor.

Troubleshooting

Software won't start up

- Make sure that your computer meets the operating requirements.
- Check whether other applications might be running.
If other applications are running, KORG KONTROL Editor might be unable to start up, or might be unable to transfer data.
If you're unable to start up, close all other applications and try again.

Can't transfer data

- Make sure that the microKEY has been detected by the connected computer.
If you are using Windows XP, go to the Control Panel, open "Sounds, Speech, and Audio Devices" → "Sounds and Audio Devices," and check the "Hardware" tab page.
If you are using Windows Vista/7, go to the Control Panel, open "Hardware and Sounds" → "Device Manager," and check the "Sound, Video, and Game Controllers" tab.
If you are using Mac OS X, open "Applications" → "Utilities," then start "Audio MIDI Setup."
For Mac OS X 10.5 or earlier, check the "MIDI Devices" tab.
For Mac OS X 10.6 or later, open and check the "MIDI Studio" window by selecting "Show MIDI Window" from the "Window" menu.
- Make sure that the latest Korg USB-MIDI driver is installed.
You can download the latest Korg USB-MIDI driver from the Korg website.
<http://www.korg.co.jp/English/Distributors/> or <http://www.korg.com>
- If you're specifying the MIDI ports manually, make sure that the MIDI port settings are correct.