

MidiKey2Key

START/STOP SCRIPS MANUAL

What is this manual about?

Since **MidiKey2Key** so far (v2.0.2.0) cannot start two different programs in a toggling mode (start prog. A, next time the Midi-command is received starting Prog. B, after this again Prog Y, ...), this is a VB-script example, that shows, how this can be achieved by a script.

This lets turn Your setup into a sample-player that start and stops playing, when the same Midi-pad is pressed again.

Just edit the script(s) to Your needs and start it from a **MidiKey2Key** Start-Program-Action as shown below.

What is included and how to use?

The examples show, how to start and stop VLC playing hidden a sound file. They can be used to have a couple of sound-effects prepared on a Midi-controller to let them play and stop by the same single Midi-key.

There are two scripts included:

StartStopVLC_4.vbs

This is the script that should fit the most common purposes. It starts VLC in the background playing a sound file that is provided **as a start argument** to the script. When it is called the second time, it checks the running tasks and if vlc.exe is detected, it will send the stop-command to VLC. It is useful to handle a couple of sound files with just a single script. Check it out at the Run-prompt (Win+R) or from a command-window by typing:

```
C:\path-to-your-script\StartStopVLC_4.vbs "C:\path-to-your-soundfiles\my_soundfile.mp3"
```

Call it again to stop vlc.

This script works with a single instance of VLC only.

StartStopVLC_1a.vbs

This is a version that does not try to detect a running program by the task-list. It generates an empty file to remember, whether the job is running or not.

If it detects this file, it will call the terminate-command (and delete the temporary file again).

It also deletes the temporary file, when the initially task is finished (i.e. VLC played the sound file to it's end).

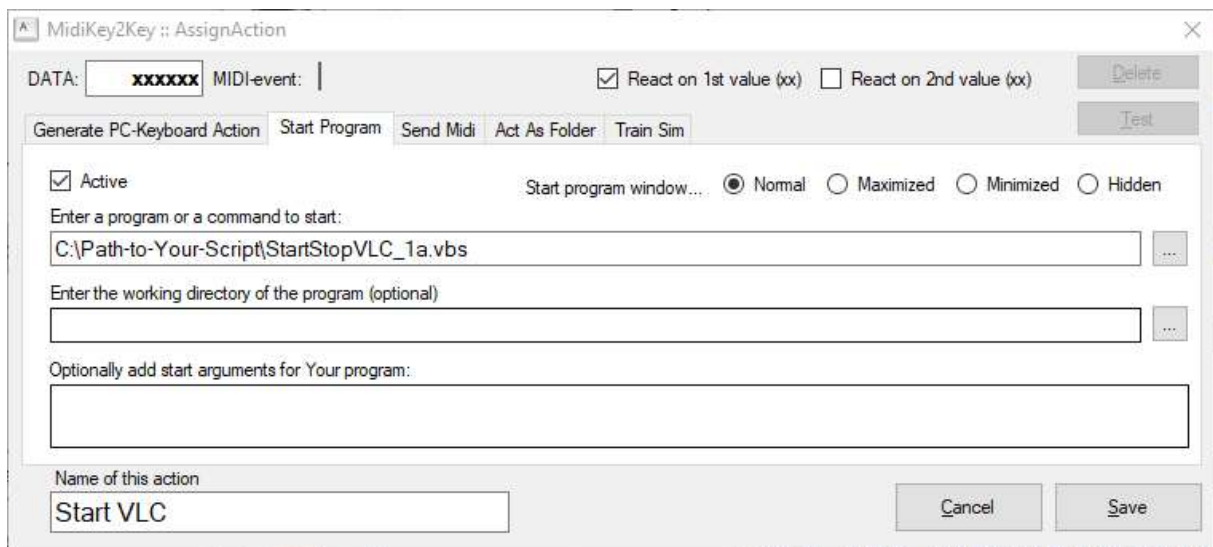
Edit these scripts by changing the path to vlc (or any other program to start and stop) and/or the path/name of a sound file in the marked area.

Note: to stop a program that does not have a stop-command for the command-shell, use
wshshell.Run "Taskkill /IM myProgram.exe /F", 0, false

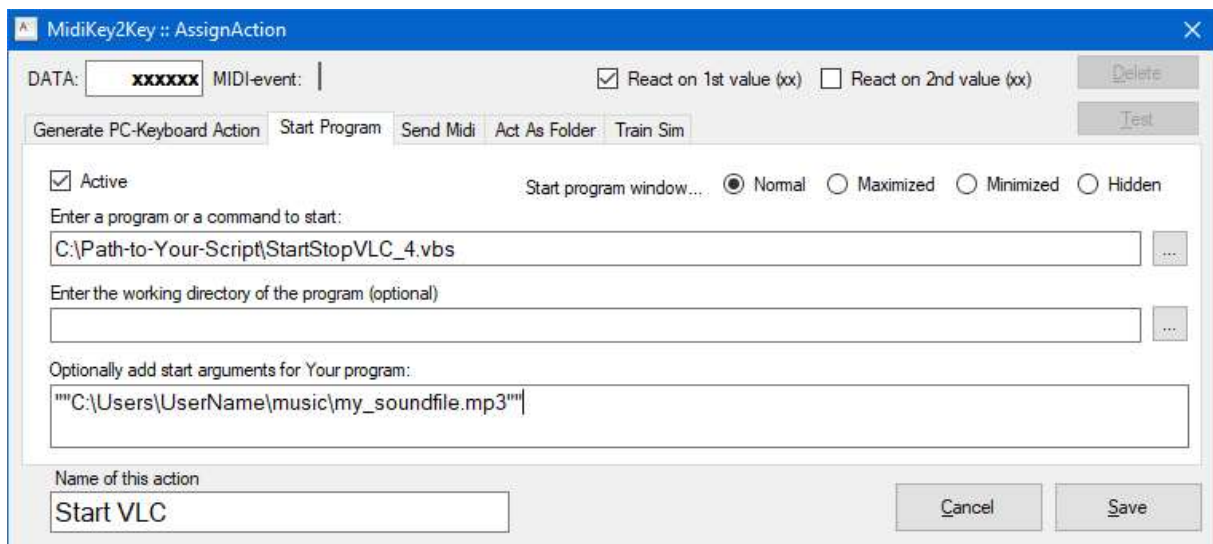
to terminate it instead the given vlc-example.

How to configure MidiKey2Key?

Generate a new action by pressing a pad on Your Midi-device, doubleclick on the NoteOn-event in the log-window and write the edited script **StartStopVLC_1a.vbs** into the program/command input-box:



StartStopVLC_4.vbs needs a sound file as argument, so set the dialog like this:



Due to a bug of the MidiKey2Key (at least up to v2.0.2.0) You need to put Your sound file path/name into **double quotes**, when it contains whitespaces.

This has to be done when entering the filename for the first time **and every time this action is edited!** (Because of the bug, the outer quotes disappear.)

Using toggling LEDs as feedback

You can use the built in **Send-Midi toggling function** (if Your Midi-device is capable to set LEDs controlled by incoming MIDI-commands, like AKAI APC or Novation launchpad) by setting two different MIDI-commands (A/B) to send to Your device like shown below.

This is for state A:

The screenshot shows the 'MidiKey2Key :: Editing Action Nr. 2' window. At the top, 'DATA' is set to '9031xx' and 'MIDI-event' is 'TEST'. There are checkboxes for 'React on 1st value (31)' (checked) and 'React on 2nd value (xx)' (unchecked). Below this are tabs: 'Generate PC-Keybord Action', 'Start Program', 'Send Midi', 'Act As Folder', and 'Train Sim'. The 'Send Midi' tab is active. On the left, there are settings: 'Active' (checked), 'Midi Channel' (1), 'Msg Type' (Note On), 'Sub Type' (empty), 'Data 1' (3C), 'Data 2' (empty), 'Key' (C3), and 'Pause (ms)' (empty). There are buttons for 'Clear All', 'Remove Last', 'Add', and 'Test Midi'. A dropdown menu shows 'AKAI APCmini'. On the right, a list contains the value '903803'. At the bottom, there is a text field for 'Name of this action' containing 'TEST', and 'Cancel' and 'Save' buttons.

(It turns the upper left LED on an AKAI APCmini red.)

This is for state B:

The screenshot shows the 'MidiKey2Key :: Editing Action Nr. 2' window for state B. The settings are identical to state A, except that the 'Midi Channel' is now set to '1' and the 'Msg Type' is 'Note On'. The 'Data 1' is '3C' and 'Data 2' is empty. The 'Key' is 'C3'. The 'Pause (ms)' is empty. The 'Test Midi' button is highlighted. The dropdown menu shows 'AKAI APCmini'. The list on the right contains the value '903800'. The 'Name of this action' field contains 'TEST'.

(It turns the upper left LED on an AKAI APCmini off.)